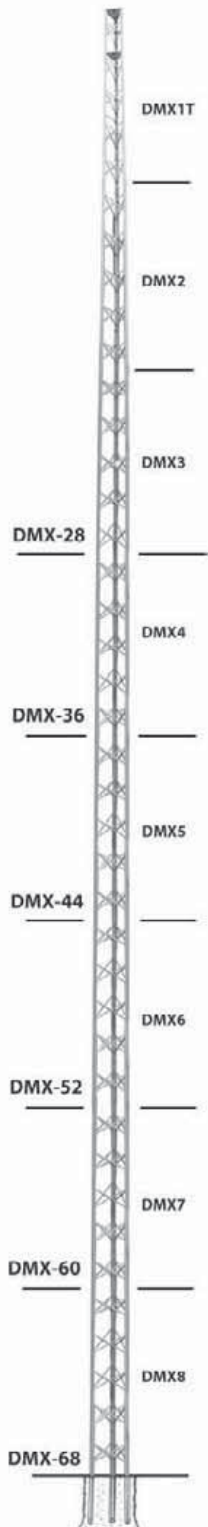


# DELHI TOWERS

DMX Standard, Medium & Heavy Duty Towers



ÉLECTRONIQUE  
**MERCIER**  
télécommunications sans fil



## Features

- Attractive **tapered** design.
- "X" brace with beaded channel leg.
- Hi-strength galvanized steel construction.
- Eight foot sections.
- Compact shipping package.
- Free-standing installation.
- Ideal for amateur radio and industrial/commercial communications applications.
- Climb shields recommended.

## Standard Tower Packages

DMX towers are packaged complete with CBS concrete base stubs, DM mast, top plate, rotor plate, TMCA clamp assembly and all necessary hardware. Height includes mast.

## Medium & Heavy Duty Tower Packages

DMXMD and DMXHD towers are packaged complete with CBS concrete base stubs, top plate, rotor plate, 2 model 244A cast aluminum mast clamps and all necessary hardware. (Mast not included)

## Tower

<b>DMX-28</b>	28' (8.53 m)	<b>DMXMD-32</b>	32' (9.75 m)
<b>DMX-36</b>	36' (10.97 m)	<b>DMXMD-40</b>	40' (12.19 m)
<b>DMX-44</b>	44' (13.41 m)	<b>DMXMD-48</b>	48' (14.63 m)
<b>DMX-52</b>	52' (15.85 m)	<b>DMXMD-56</b>	56' (17.07 m)
<b>DMX-60</b>	60' (18.29 m)	<b>DMXHD-32</b>	32' (9.75 m)
<b>DMX-68</b>	68' (20.73 m)	<b>DMXHD-40</b>	40' (12.19 m)
		<b>DMXHD-48</b>	48' (14.63 m)

DMX BASE SECTION	HOLE RAD. (INCHES)	MINIMUM CONCRETE REQUIREMENT (CU. YDS)
-3	18	1.0
-4	19	1.2
-5	21	1.4
-6	22	1.6
-7	24	1.8
-8	25	2.0

Wade Antenna's ongoing policy of continuing development may result in specification changes to its products.

# DELHI TOWERS

DMX Standard, Medium & Heavy Duty Towers (continued)

## Load Limits

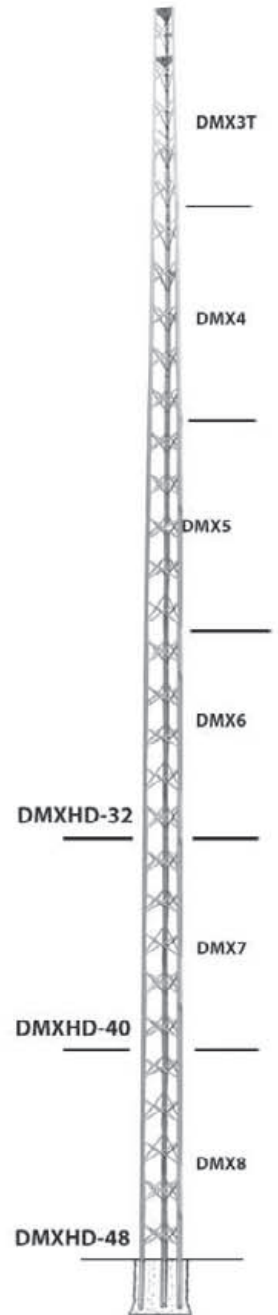
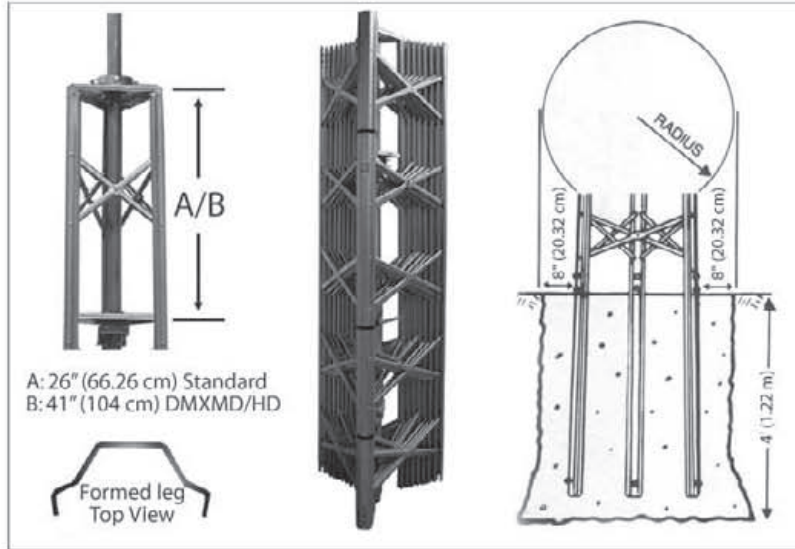
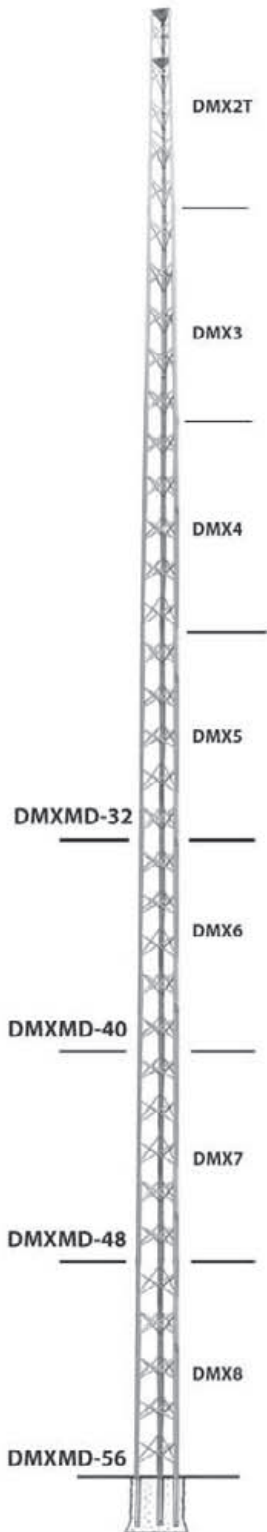
DMX Standard duty towers are designed to support up to 3 square ft. (0.28 m<sup>2</sup>) projected wind area.

DMXMD Medium duty towers are designed to support up to 6 square ft. (0.56 m<sup>2</sup>) projected wind area.

DMXHD Heavy duty towers are designed to support up to 9 square ft. (0.84 m<sup>2</sup>) projected wind area.

**Note:** Guy wires must be used for larger loads or if straight sections are added for extra height.

**Note:** For tower accessories or parts that may be ordered separately, please refer to DMX parts and accessories page.



**ÉLECTRONIQUE  
MERCIER**  
télécommunications sans fil

Wade Antenna's ongoing policy of continuing development may result in specification changes to its products.